



# **Corner Retail Display with Two Adjustable Tempered Glass Shelves**

## **Assembly Instructions**

SKU: MRCORNERBK Black  
SKU: MRCORNERCH Cherry  
SKU: MRCORNERHM Maple  
SKU: MRCORNERWH White  
SKU: MRCORNERBW Barnwood

Scan the QR  
code to visit the  
product page.



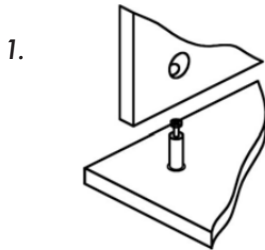
## Safety Information

Before beginning assembly, please take time to read through the instructions and understand each step thoroughly. Displays2go is not responsible for any personal injury or product damage due to mishandling, ncorrect assembly or incorrect use of this product.

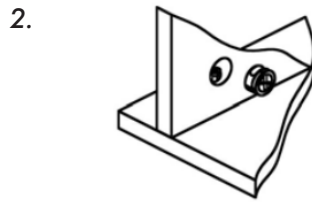
⚠ Handle all glass pieces with care!

ⓘ Tools required: screwdriver or drill.

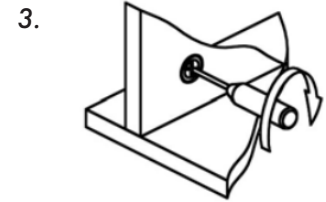
### How to Join 2 Boards with Cam Locks



Insert the cam bolt into the board, then lower the hole of the joining board over the cam bolt.



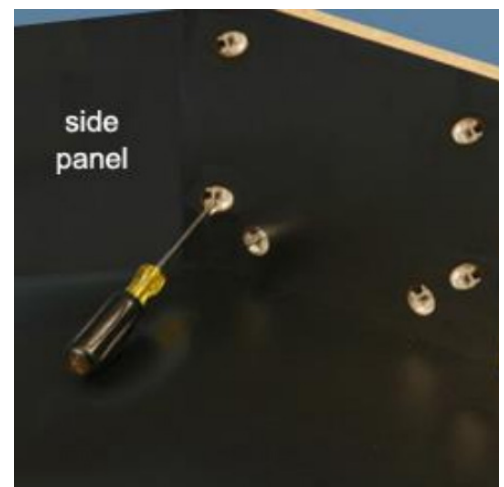
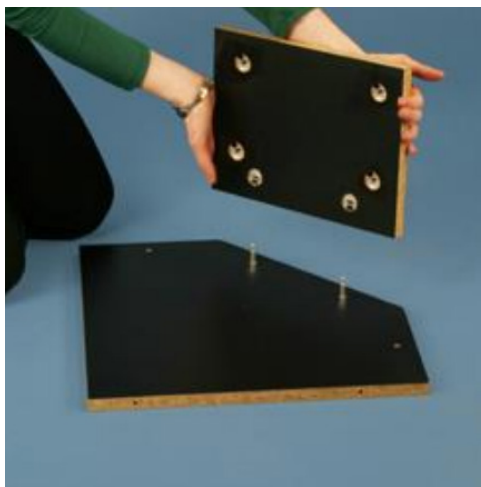
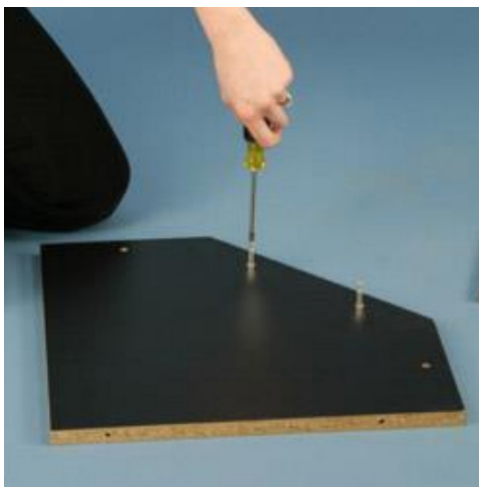
Each cam lock has an open section on the back. Insert the cam lock into the hole of the joining board, making sure the open section is placed over the head of the cam bolt.



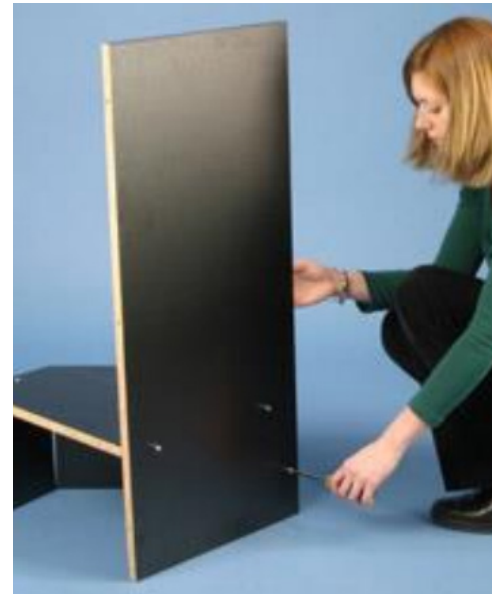
Turn the cam lock clockwise with a screwdriver to lock the cam lock to the cam bolt. Do not over-tighten.

## Assembly

1. Screw two cam bolts into the bottom panel using a screwdriver.
2. Insert cam locks into the angled panel so the openings face the same direction as the bolts. Turn the cams clockwise with the screwdriver to tighten and lock them into place.
3. Attach each of the base side panels with 2 cams. Turn cams clockwise to tighten.



4. Position the narrow side panel and attach to the base using 3 screws.



5. Position the wide side panel and attach to the base and other side panel using 6 screws.
6. Place shelf supports at your intended height, then carefully place the glass shelves.



**Assembly is  
complete.**

